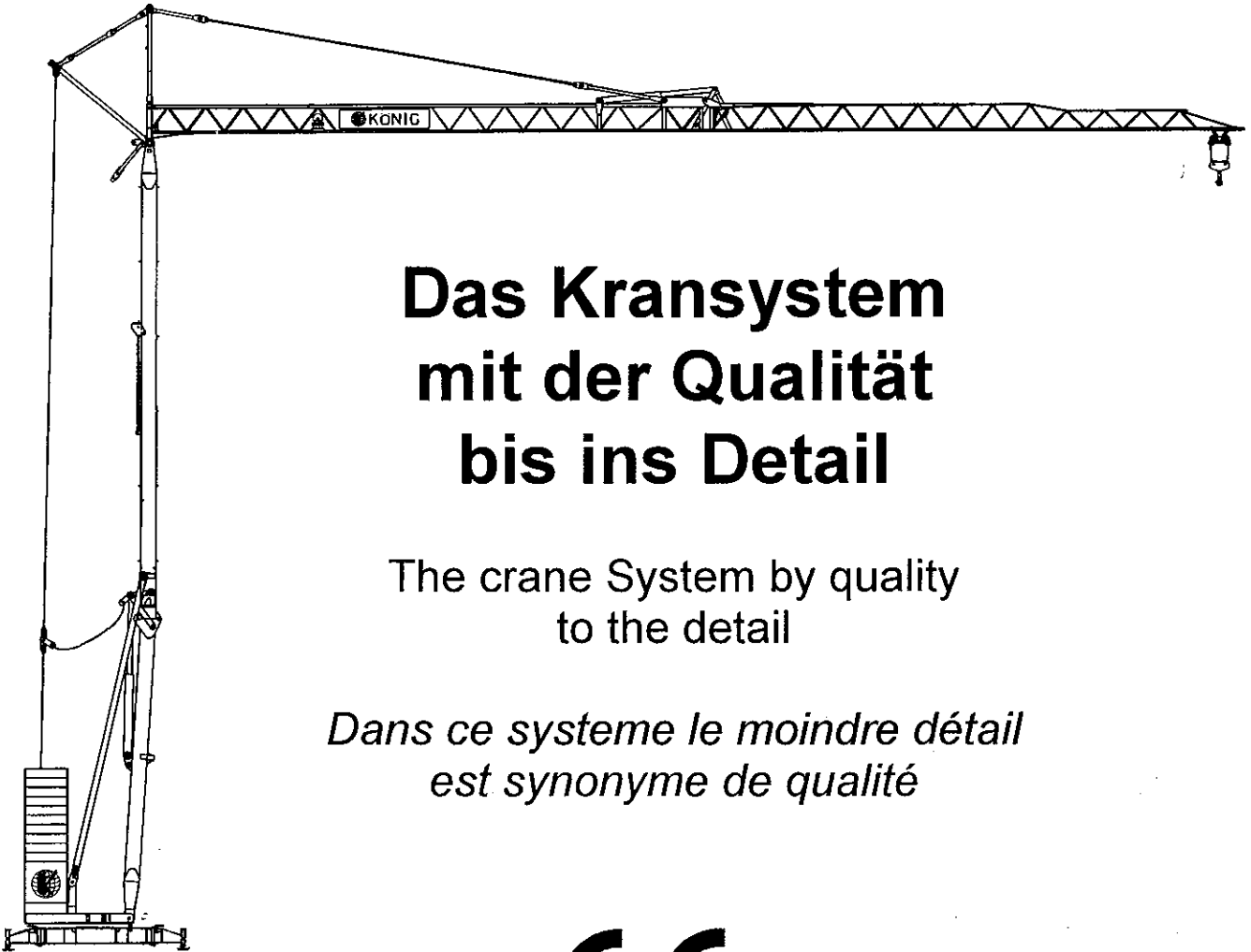


Turmdrehkran K 1030 Hydro

Tower Crane ● *Grue à tour*



Das Kransystem mit der Qualität bis ins Detail

The crane System by quality
to the detail

*Dans ce systeme le moindre détail
est synonyme de qualité*



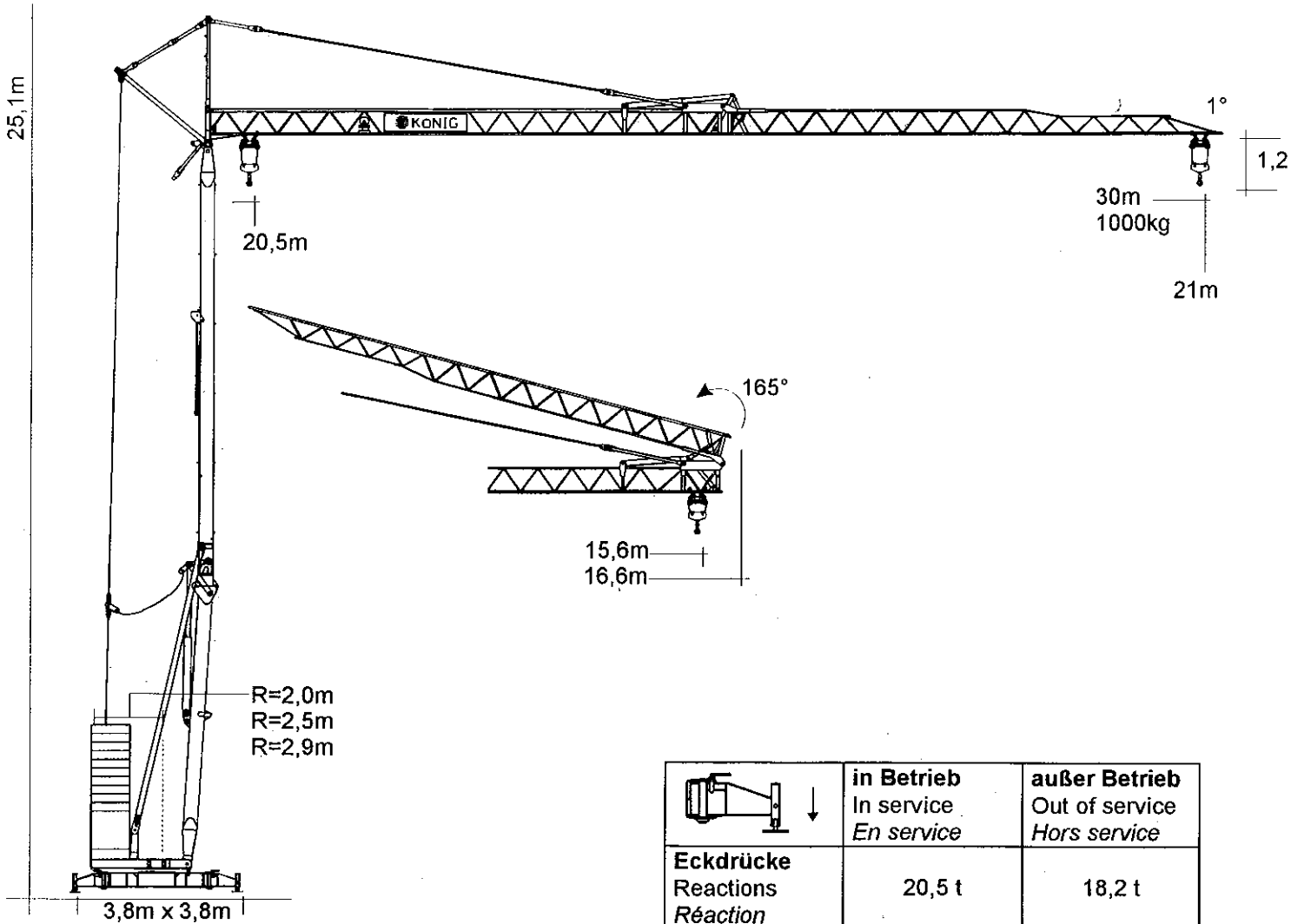
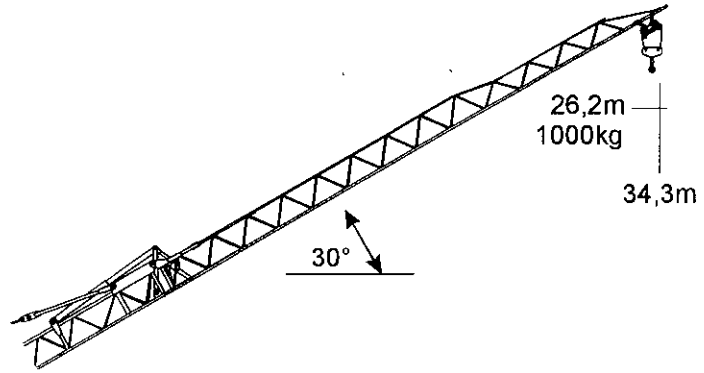
DIN 15018 ● H1 ● B3

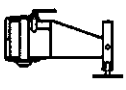


KÖNIG-KRANE
Made in Germany

K 1030 H

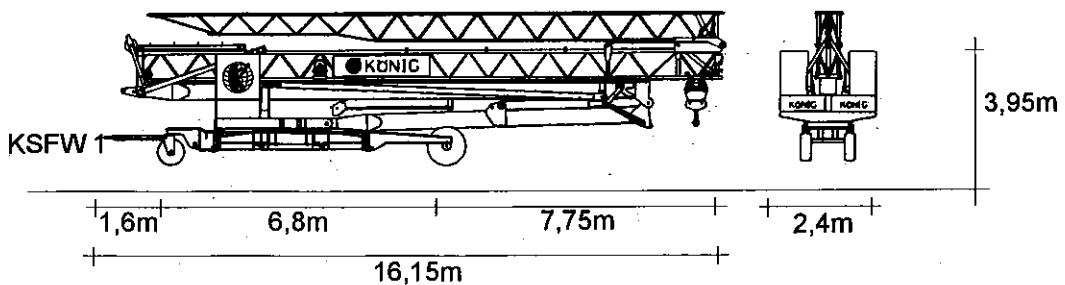
Technische Daten • Technical data • *Caractéristiques techniques*



	in Betrieb In service <i>En service</i>	außer Betrieb Out of service <i>Hors service</i>
Eckdrücke Reactions <i>Réaction</i>	20,5 t	18,2 t

Straßentransport

Transport by road • *Transport sur la route*





K 1030 H

Technische Daten • Technical data • *Caractéristiques techniques*

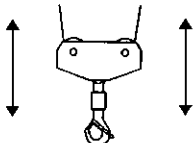
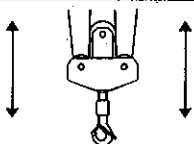
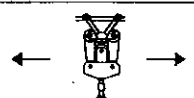
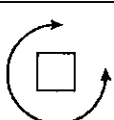
Ausladung und Tragfähigkeit

Radius and capacity • *Portée et charge*

	0° (m)	16	18	19	20	21	22	23	24	25	26	27	28	29	30
	kg	2000	1832	1720	1620	1530	1450	1375	1310	1245	1190	1135	1090	1040	1000
	30° (m)	15,0	15,8	16,6	17,5	18,4	19,2	20,1	21,0	21,8	22,7	23,6	24,4	25,3	26,2

	0° (m)	9,3	10	12	14	16	18	20	22	24	26	27	28	29	30
	kg	4000	3645	2925	2430	2075	1800	1590	1415	1275	1155	1105	1055	1010	970

Geschwindigkeiten • Speeds • *Vitesses*

	Stufe • Step • Cran	m/min.	kg	kW
	1	6	2000	3,5
	2	21	2000	9
	3	48	1000	11
	1	3	4000	3,5
	2	10,5	4000	9
	3	24	2000	11
	1	20		1,5
	2	40		2,2
		0-0,8 U/min. sl./min. tr./min.		2,2

Leitungsquerschnitt bis 50 m: 5 x 10 mm²
Cross section of cable up to
Section de cable jusque à

Betriebsspannung 400 V
Operation voltage
Tension de service

Frequenz 50 Hz
Frequency
Fréquence

Gesamtanschlußwert 13,9 kVA
Power requirement (15,4 kW)
Puissance requise

Gewichte • Weight • *Poids*

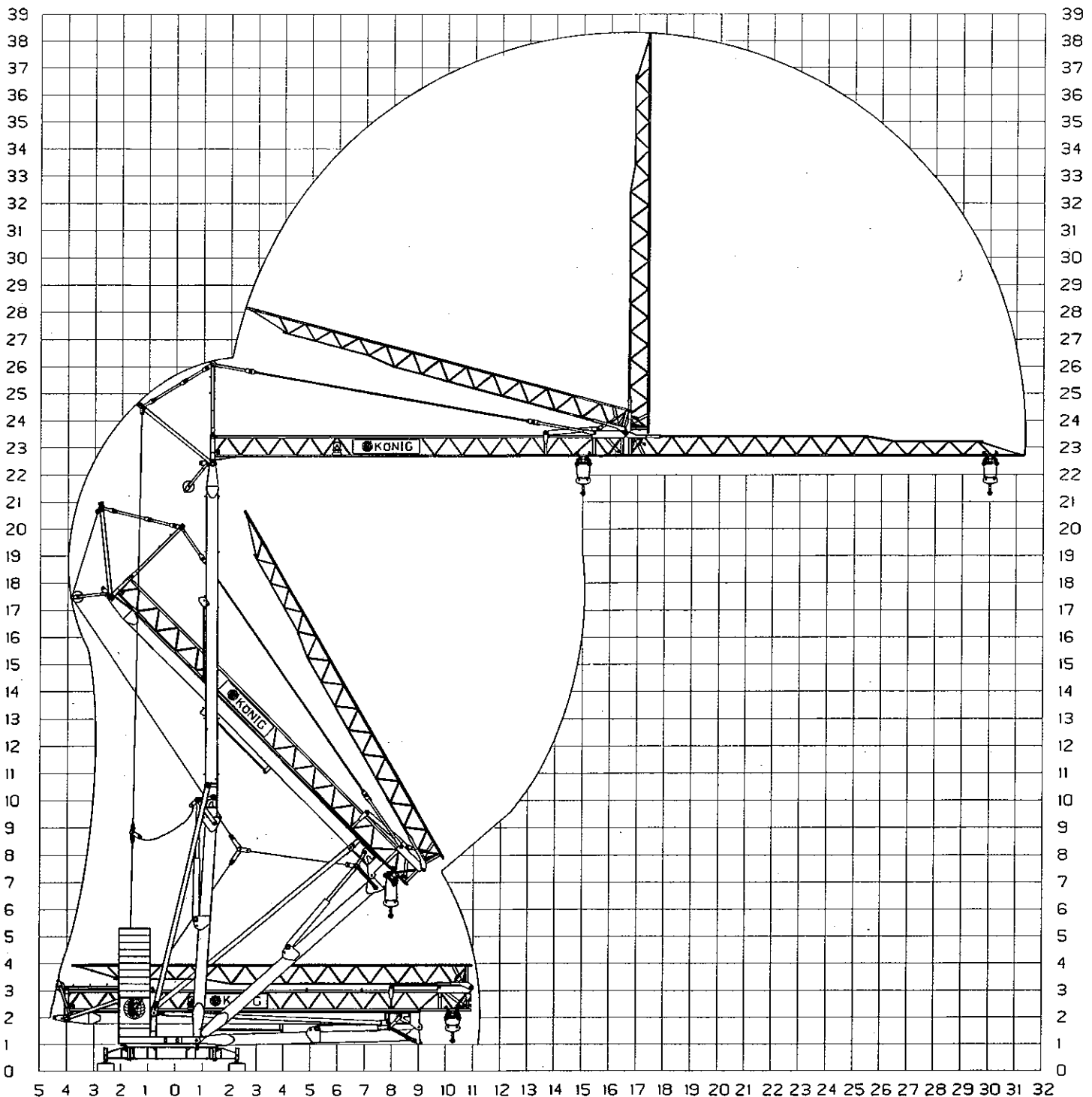
Zentralballast Central ballast weight <i>Lest de base</i>	5.900 kg	Transportgewicht ca. Transport weight approx. <i>Poids de transport env.</i>	20.150 kg*
Gegengewicht Counterweight <i>Contrepoids</i>	r = 2,9 m 11.200 kg r = 2,5 m 14.000 kg r = 2,0 m 16.800 kg	Konstruktionsgewicht ca. Dead weight approx. <i>Pois de la construction env.</i>	12.100 kg

* inkl. Transportachse KSFW1 und Transportadapter.

K 1030 H

Technische Daten • Technical data • Caractéristiques techniques

Montage • Mounting • Montage



König Baumaschinen-Vertrieb GmbH
Postfach 1164 • D-53563 Asbach/Ww.
D-53567 Asbach-Schöneberg
Tel. ++49 (0) 2683 / 9172-0 • Fax -10
www.Koenig-Krane.de

Ihr König-Fachhändler: