

Turmdrehkran K 16 F

Tower Crane - Grue à tour



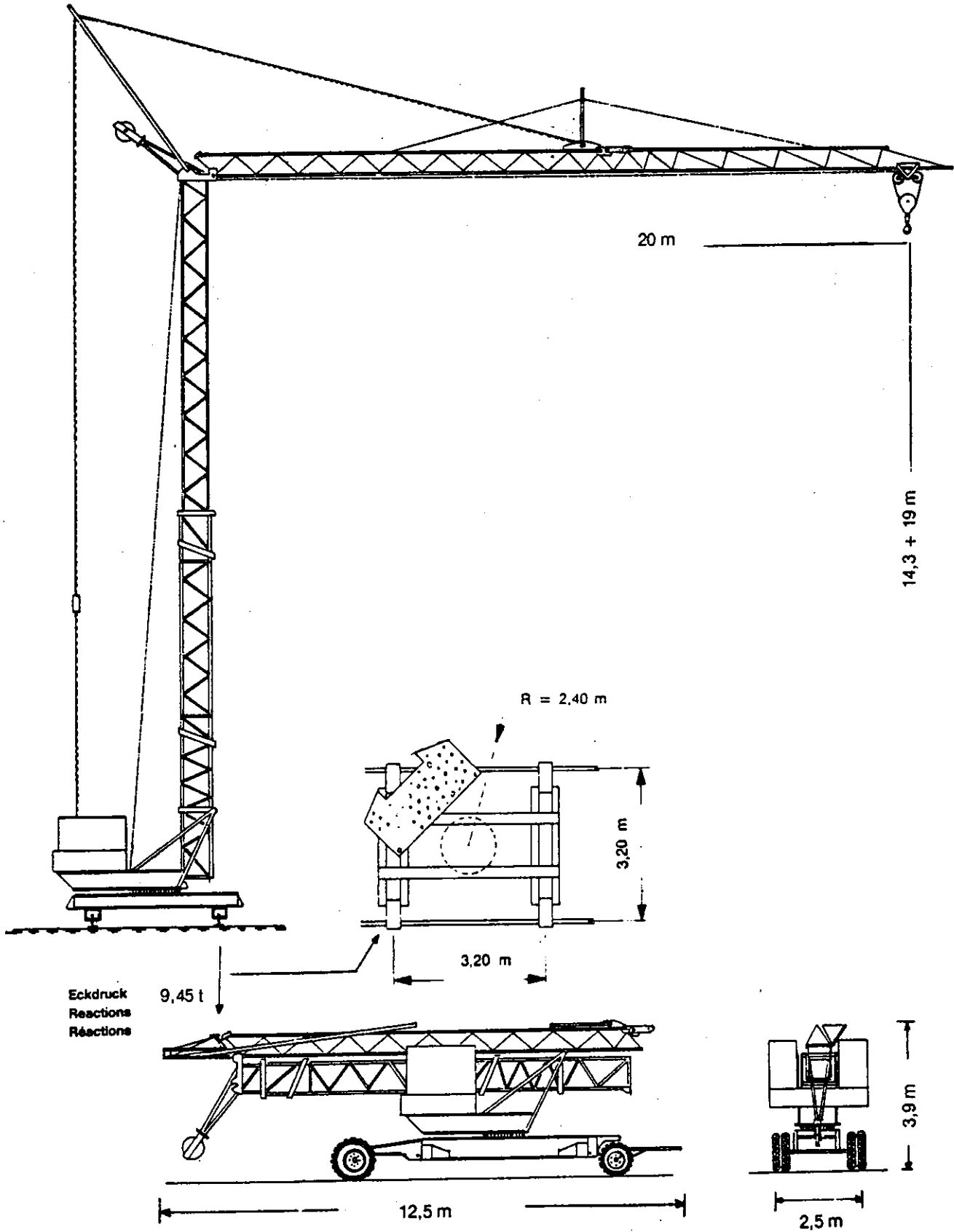
**Das Kransystem
mit der Qualität
bis ins Detail.**

**The crane system by quality
to the detail.**

**Dans ces grues là le moindre détail
est synonyme de qualité.**



KÖNIG-KRANE
Made in Germany



Transportgewicht
Road transport weight 17 880 kg
Poids de transport

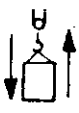

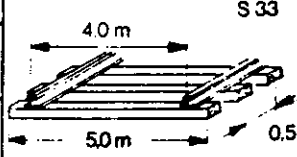


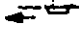



Abnehmbarer Ballast
Counterweight removable 6 500 kg
Charge déplaçable

Vollbelastverfahbar - Crane transported - Transport complete

K 16 F

Technische Daten - Technical data Caractéristiques techniques

Ausleger Länge Length of jib Longue de flèche m	Ausladung und Tragfähigkeit Radius and capacity Portée et charge									
	11,89 m	12 m	13 m	14 m	15 m	16 m	17 m	18 m	19 m	20 m
20	1500 kg	1485 kg	1345 kg	1225 kg	1090 kg	990 kg	920 kg	855 kg	800 kg	750 kg

		40 m/min. - 750 kg	7,7 kW	
		10 m/min. - 1500 kg	3 kW	
				
		30 m/min.	0,75 kW	
		25 m/min.	2 x 1,5 kW	
		0,5 + 1 U/min.	0,95 + 1,5 kW	

Konstruktionsgewicht ca.
Dead weight approx. 6710 kg
Poids de la construction env.

Gegengewichte ca.
Counterweight approx. 10900 kg
Contrepoids env.

Montage - Erection - Montage

