

Turmdrehkran K 20 F

Tower Crane - Grue à tour



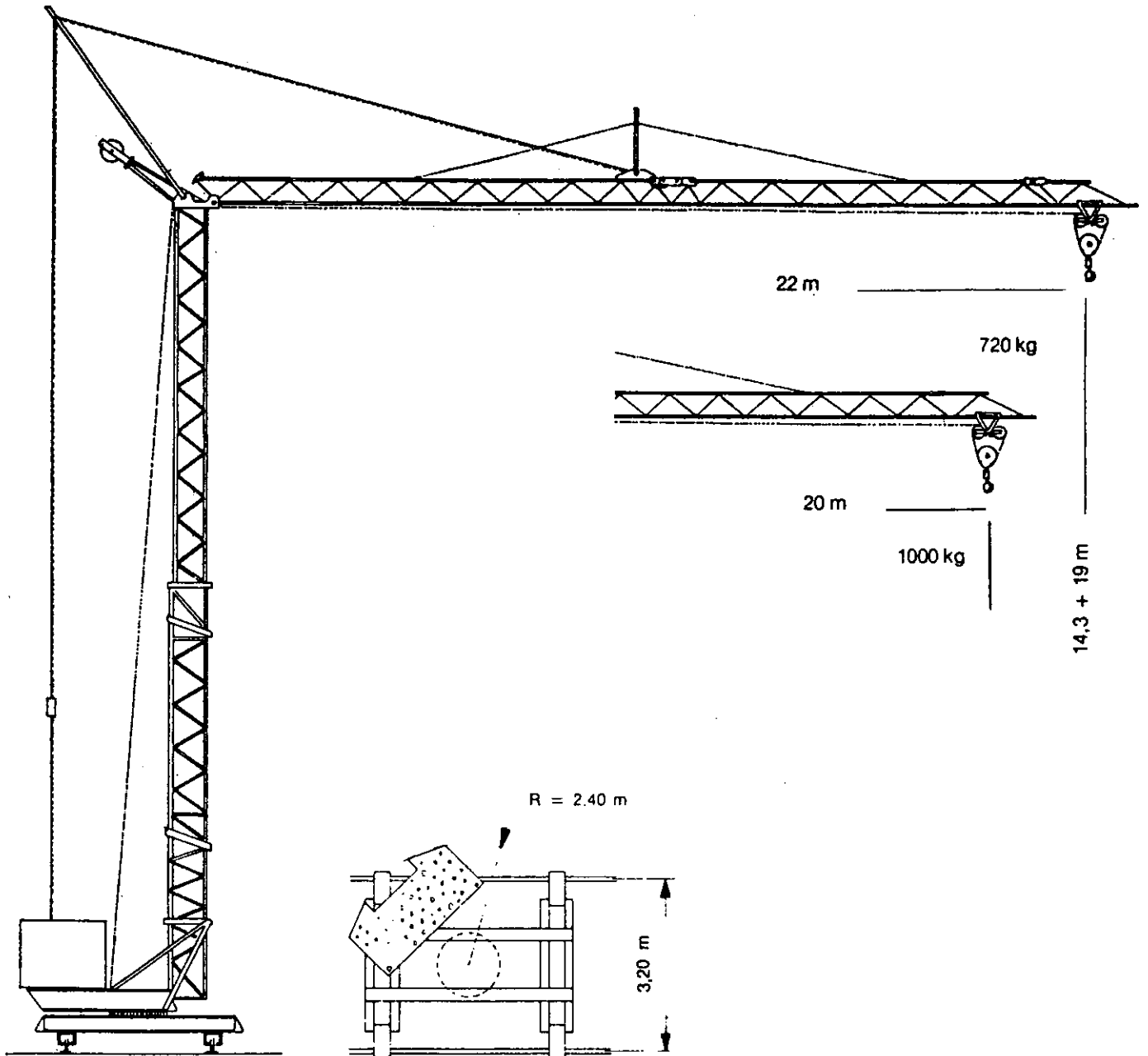
**Das Kransystem
mit der Qualität
bis ins Detail.**

**The crane system by quality
to the detail.**

**Dans ces grues là le moindre détail
est synonyme de qualité.**

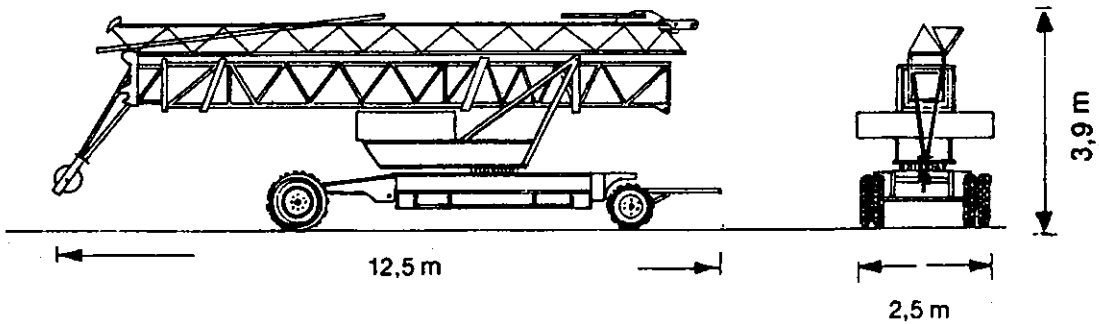


KÖNIG-KRANE
Made in Germany



Eckdruck
Reactions
Réactions

11,85 t



Transportgewicht
Road transport weight 13260 kg
Poids de transport

Abnehmbarer Ballast
Counterweight removable 8800 kg
Charge déplaçable



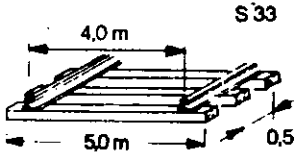


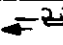

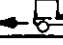

Teilballastverfahrbar
Transportable with partial counterweight
Acharge partiellement déplaçable

K 20 F

Technische Daten - Technical data Caractéristiques techniques

Ausleger Länge Length of jib Longue de flèche m	Ausladung und Tragfähigkeit Radius and capacity Portée et charge												
	10,13 m	11 m	12 m	13 m	14 m	15 m	16 m	17 m	18 m	19 m	20 m	21 m	22 m
22	2000 kg	1800 kg	1660 kg	1460 kg	1335 kg	1225 kg	1130 kg	1000 kg	930 kg	870 kg	815 kg	765 kg	720 kg

Ausleger Länge Length of jib Longue de flèche m	Ausladung und Tragfähigkeit Radius and capacity Portée et charge									
	11,41 m	12 m	13 m	14 m	15 m	16 m	17 m	18 m	19 m	20 m
20	2000 kg	1880 kg	1700 kg	1550 kg	1425 kg	1320 kg	1225 kg	1140 kg	1065 kg	1000 kg

		45 m/min. - 1000 kg	9 kW	
		22,5 m/min. - 2000 kg	7,5 kW	
		6 m/min. - 2000 kg	2,5 kW	
	30 m/min.	0,75 kW	 380 V Gesamtanschlußwert 15 kW	
	25 m/min.	2 x 1,5 kW		
	0,33 + 1 U/min.	0,75 + 2,2 kW		

Konstruktionsgewicht ca.
Dead weight approx. 7060 kg
Poids de la construction env.

Gegengewichte ca.
Counterweight approx. 13200 kg
Contrepoids env.

Montage - Erection - Montage

