

Turmdrehkran K 28 S

Tower Crane Grue à tour



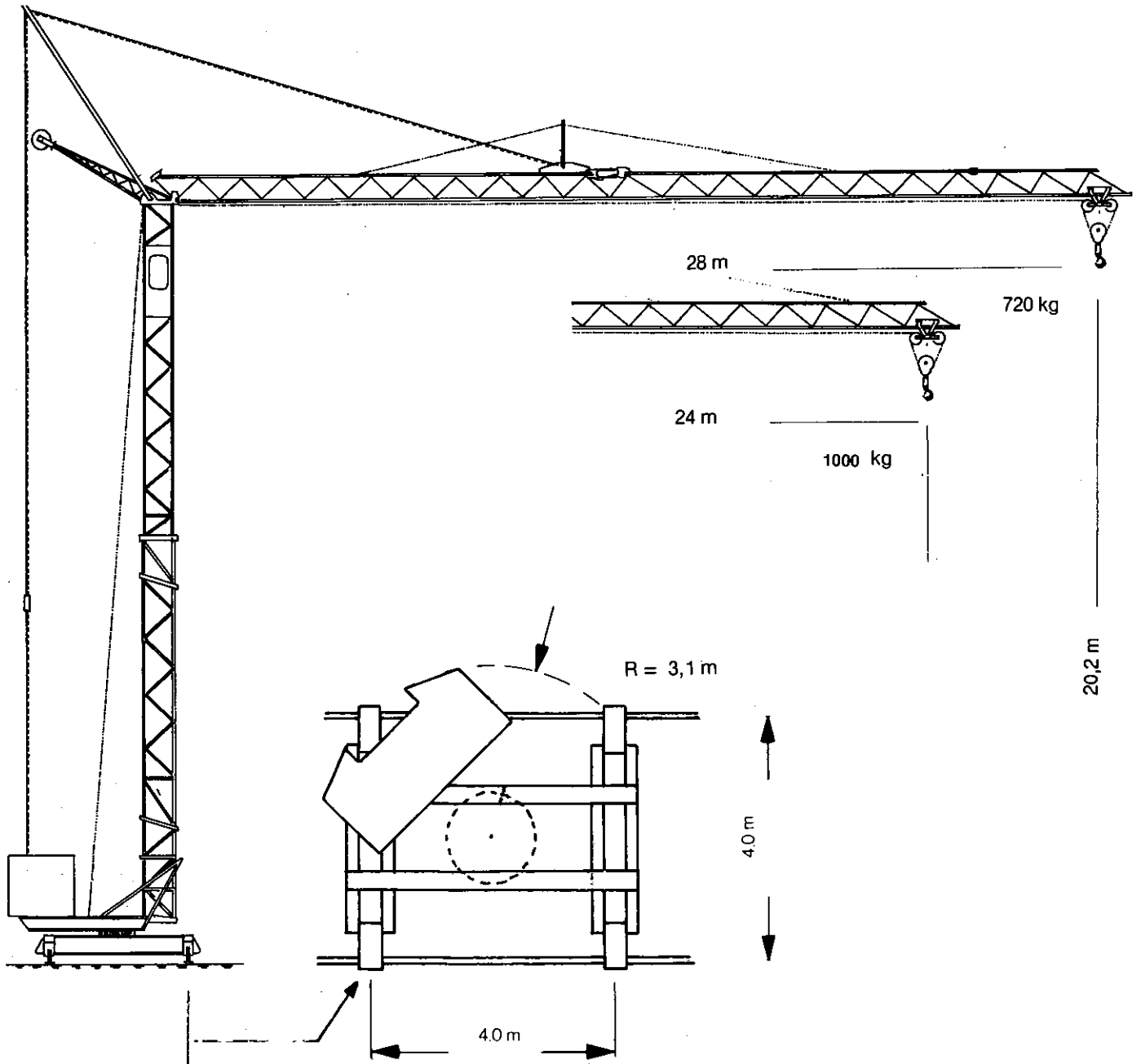
**Das Kransystem
mit der Qualität
bis ins Detail.**

**The crane system by quality
to the detail.**

**Dans ces grues là le moindre détail
est synonyme de qualité.**

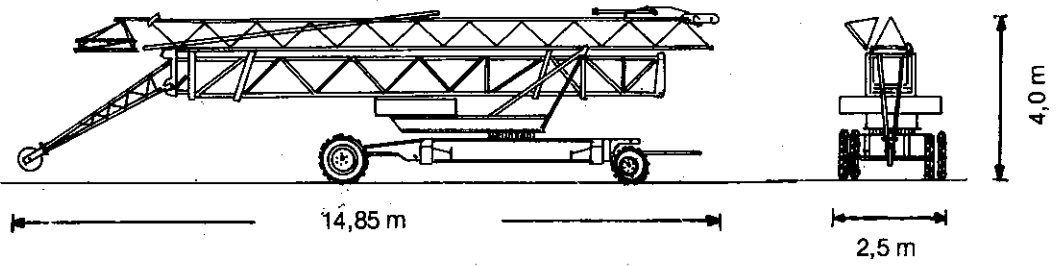


KÖNIG-KRANE
Made in Germany



Eckdruck
Reactions
Réactions

14,1 t




Transportgewicht
Road transport weight 16000 kg
Poids de transport


Abnehmbarer Ballast
Counterweight removable 11000 kg
Charge déplaçable


Teilballastverfahrbar
Transportable with partial counterweight
Acharge partiellement déplaçable







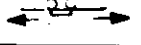


K 28 S

Technische Daten - Technical data Caractéristiques techniques

Ausleger Länge Length of jib Longue de flèche m	Ausladung und Tragfähigkeit Radius and capacity Portée et charge																	
	12,68	13	14	15	16	17	18	19	20	21	22	23	24	25	26	27	28	
28 kg	2000	1940	1770	1630	1505	1395	1305	1440	1145	1080	975	920	875	830	790	755	720	

Ausleger Länge Length of jib Longue de flèche m	Ausladung und Tragfähigkeit Radius and capacity Portée et charge											
	14	15	16	17	18	19	20	21	22	23	24	
24 kg	2000	1890	1745	1625	1515	1420	1335	1260	1190	1125	1000	

Ausleger Länge Length of jib Longue de flèche m	Ausladung und Tragfähigkeit Radius and capacity Portée et charge																			
	9,2	10	11	12	13	14	15	16	17	18	19	20	21	22	23	24	25	26		27
28 kg	3000	2690	2380	2130	1880	1710	1565	1440	1335	1240	1155	1080	1015	955	900	850	805	765	725	690

				
		45 m/min. - 1000 kg (9 kW)		22,5 m/min. - 2000 kg (9 kW)
		22,5 m/min. - 2000 kg (7,5 kW)		11,25 m/min. - 3000 kg (7,5 kW)
	6 m/min. - 2000 kg (2,5 kW)	3 m/min. - 3000 kg (2,5 kW)	380 V	
	15 + 30 m/min.	1,1 + 1,5 kW		
	0 - 1 U/min.	3 kW	Gesamtanschlußwert 13,5 kW	

